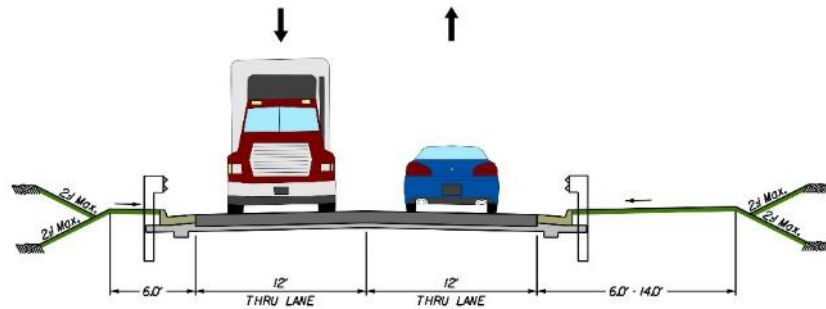
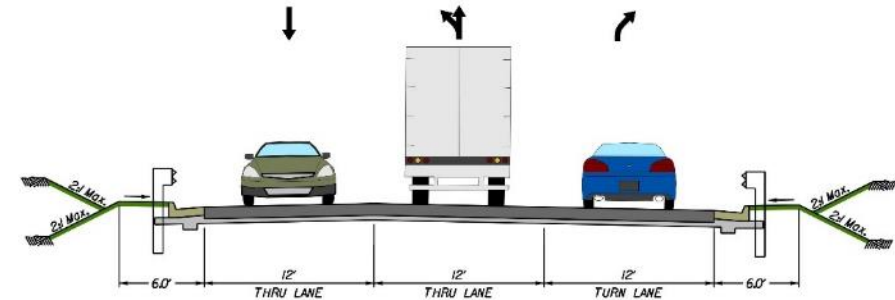


Skiffes Creek Connector - Typical Sections

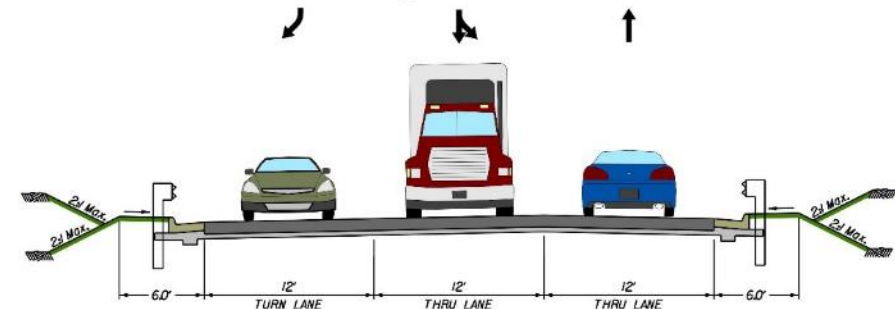
SKIFFES CREEK CONNECTOR



SKIFFES CREEK CONNECTOR AT ROUTE 143

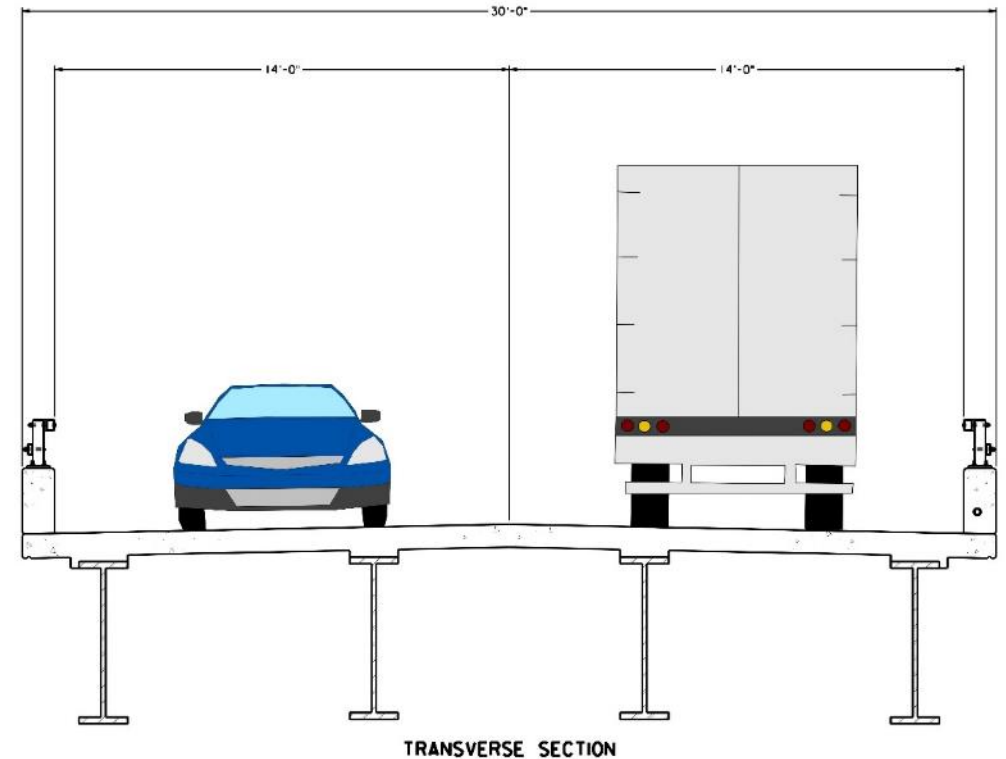
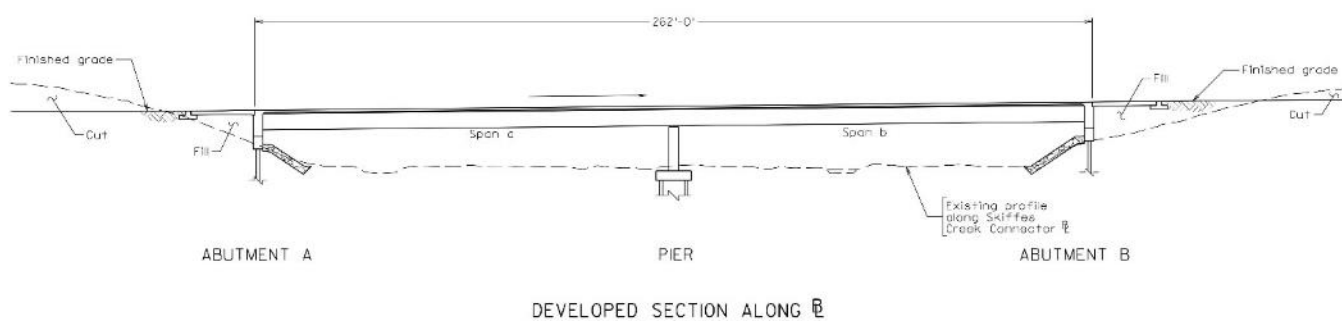
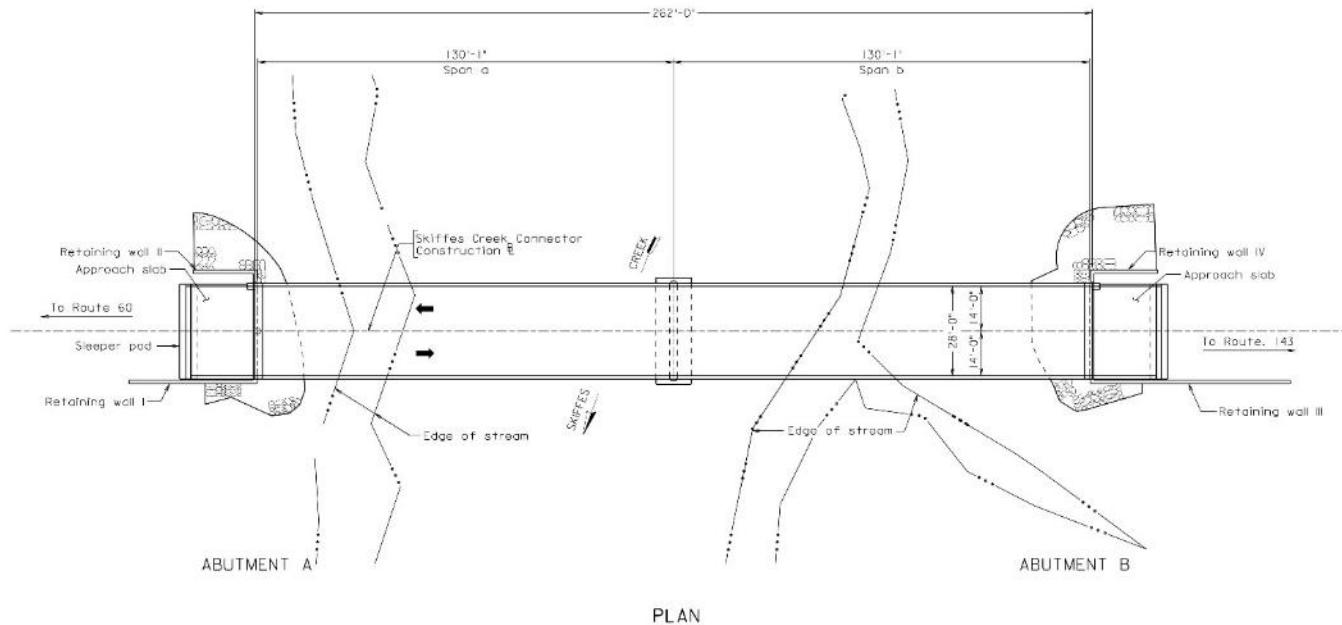


SKIFFES CREEK CONNECTOR AT ROUTE 60

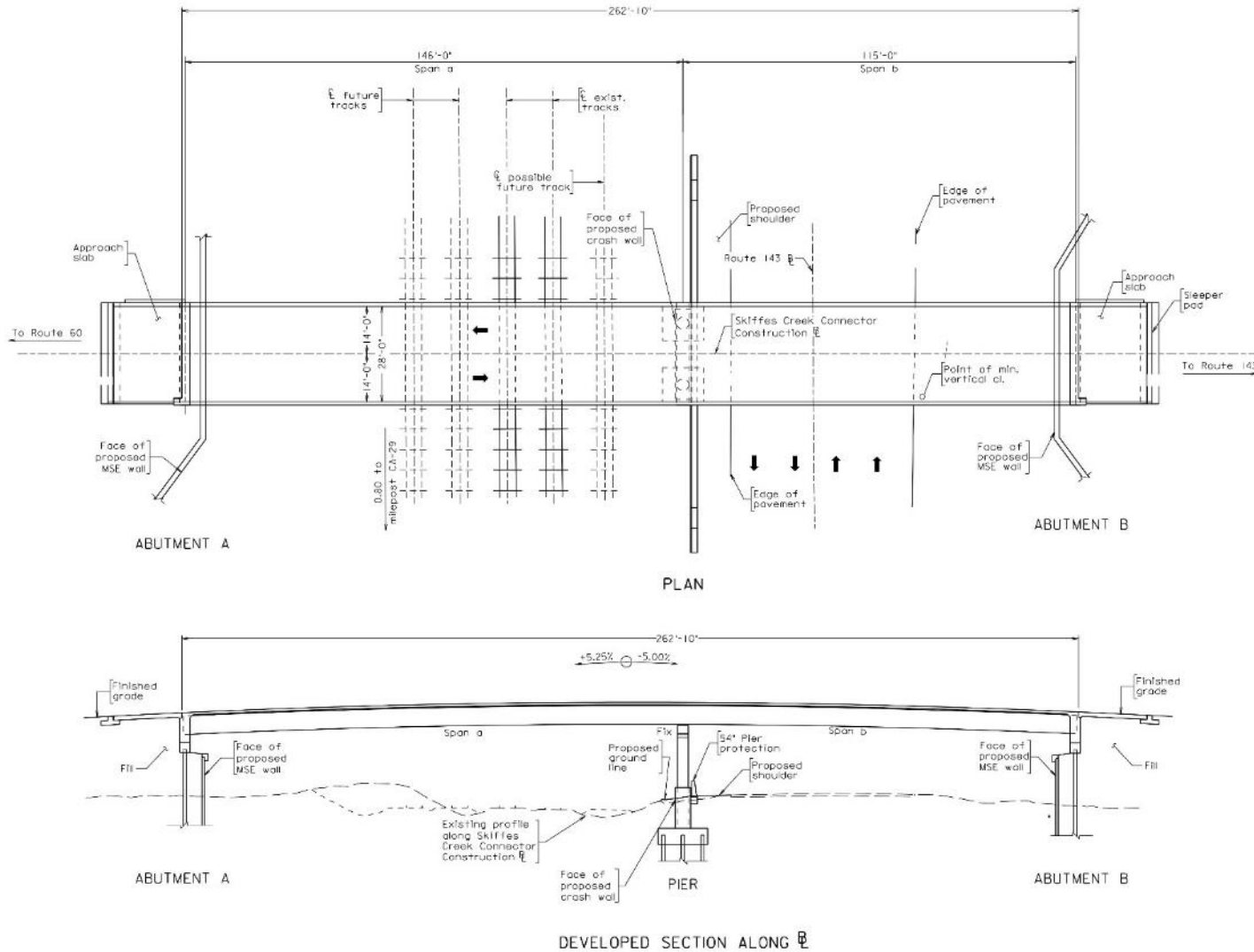


Bridge Over Skiffes Creek - Typical Section

- Two Span Configuration
- Steel Girders
- Concrete parapet steel rail (CPSR) Railing



Bridge Over CSX & Route 143 - Typical Section



- Two Span Configuration
- Steel Girders
- Concrete parapet steel rail (CPSR) Railing
- Fencing

